

Outdoor Education

Supporting and encouraging
learning in the outdoors

SERVICE BROCHURE

Call **0333 300 1900** Email **oecbookings@entrust-ed.co.uk**
or visit **www.entrustoutdoors.co.uk** to find out more.

 Entrust Education Improvement  Entrust Support Services Limited  @entrustEDU

entrust
Inspiring Futures



We provide unforgettable,
fun, outdoor **learning experiences.**

Outdoor Education

At Entrust Outdoors, we believe that every young person should be encouraged to venture outside more and explore the natural world around them. By nurturing fascination in the great outdoors, we promote health and well-being with the aim of inspiring the explorers of tomorrow.

How we can help

Our well qualified instructors aim to provide unforgettable, fun, adventure learning experiences. Through these we aim to boost confidence and build character, promote health and well-being and develop social, emotional and environmental awareness.

We can help your school/setting with:

- Increasing motivation and appetite for learning
- Nurturing concentration skills for use in the classroom
- Developing positive characteristics
- Providing rich context for relationships to grow and personalities to flourish
- Building skills for life and employability
- Broadening horizons and bringing perspective

Discover More

www.entrustoutdoors.co.uk

Outcomes for you:



Building Confidence

We will help build confidence and develop pupils' communication skills.



Supporting Health & Well-being

Our learning programmes inspire pupils to venture outside more and explore the outdoors.



Nurturing Concentration Skills

We develop concentration skills that contribute to classroom learning.



Conservation Awareness

We teach pupils to respect nature and conserve the natural world.



Explorer Residentials

3 and 5 day programmes

Our residentials provide an all-round experience with a range of activities to suit a variety of ages and interests.

Suitable for Year 3 upwards, we offer 3 day and 5 day action adventure programmes based across our three outdoor centres. Perfect for your young explorers!

We will provide pupils with an action packed itinerary that teaches bushcraft skills as well as allowing time for activities such as various team building challenges, BMXing, high ropes, wall climbing, water activities and much more. Finish the day by toasting marshmallows around a roaring camp fire.



3-Day Residential

A combination of centre based adventure challenge and bushcraft activities to help young explorers on their way.



5-Day Residential

Our classic adventure learning programme with a mix of fun and engaging centre based challenge activities and off-site adventures. Not to be missed!

Activities may vary at each venue and subject to seasonality.



Wilderness Academy

the ultimate camping experience



Based in the heart of the Staffordshire Moorlands, Wilderness Academy provides a more authentic outdoor camping experience.

Located in the heart of the Staffordshire Moorlands with picturesque views of Rudyard Lake, Wilderness Academy offers young people the opportunity to immerse themselves in nature, camp in the woods, learn new skills and take part in a range of fun, exciting activities with their friends.

Working in teams, pupils will spend their days exploring the forest and learning bushcraft skills, whilst their evenings will be spent sat around the campfire, sharing stories and reviewing their experiences. The programme has been designed to focus on personal development which includes life skills, decision making, communication and team work.

Activities include...

- Build shelters, light fires and enjoy campfire sessions
- Cook campfire food and learn how to purify water
- Learn navigational skills and trek through the forest
- Learn and abide by the Countryside Code
- Learn wilderness first aid
- Tracking and wilderness games
- Wildlife camera traps

Why Choose Wilderness Academy?



Improves Mental Health and Wellbeing

During the winter months, young people spend more time indoors away from natural light, which has a profound effect on mental health. Wilderness Academy provides substantial time outdoors, helping to improve wellbeing and inspire exploration in the natural world.



Teaches Conservation

A key theme that runs through our learning programme is conservation. Young people will learn the importance of respecting and preserving the natural environment - adopting this mindset to take into adulthood.



Meets the Ofsted Framework

Ofsted recommends that schools evaluate the quality of learning outside the classroom to ensure that it has maximum impact on learners' achievement, personal development and wellbeing. Wilderness Academy can help you meet these recommendations.

Wilderness Academy is available from April to June.



Twilight Explorer

a magical outdoor experience

Our 2-Day twilight residential package incorporates your pupils' first night away from home and provides a true taste of outdoor camping. An exciting programme that gives an insight into nomadic tribal cultures. Pupils will experience fire lighting techniques, stories, chants and more.

Fun, inclusive learning programme

We have designed our programme to maximise excitement, learning, personal development and fun - resulting in what we consider to be a truly magical outdoor experience. This experience includes food, accommodation, specialist equipment and the wisdom of our elders!

Activities include:

Fire lighting

Using the wisdom of the elders, pupils will be split into two tribes and taught the primitive ancient skill of fire lighting.

Camp crafts

Using woodland materials, pupils will create a range of outdoor themed crafts.

Drumming workshop

Pupils will take part in fun, engaging drumming workshops designed to focus attention and stimulate the senses.

Twilight Explorer is available from November to April.

Flint & Fire

an journey through time

Flint and Fire is based around nature awareness and links to the Key Stage 2 Prehistoric Stone Age unit. Young people will experience a wide range of fun activities that will awaken and stimulate their senses, bringing together a multitude of skills and ancient techniques.

Explore how man created fire and what tools he used to hunt, gather food and survive. Pupils will have the opportunity to take part in fun, practical activities designed to stimulate senses and focus their concentration skills for application in the classroom.

Flint and Fire is available from November to April.

Activities include:

Camouflage challenge

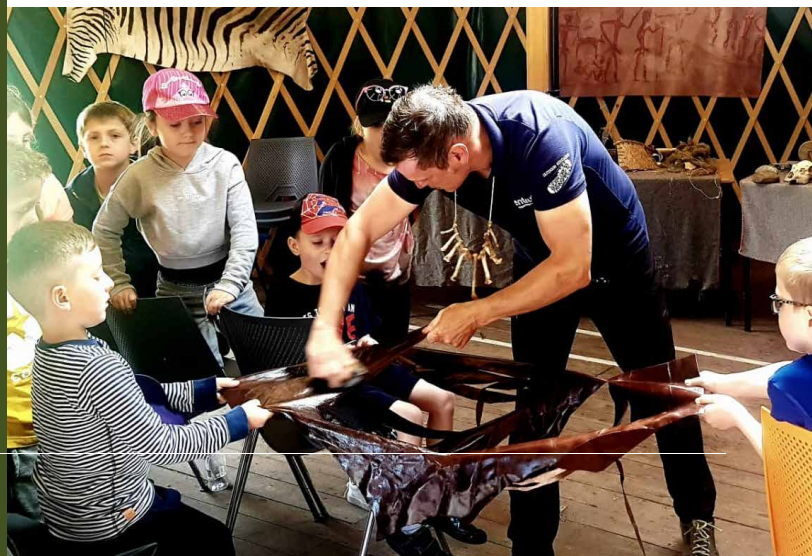
Pupils will be given instructions of how to conceal themselves using plants and pigments (face paint). They will then engage in evasion games to remain undetected.

Camp fire

No visit to our centres would be complete without a camp fire! Pupils can enjoy toasting marshmallows and singing songs under the night sky.

Pump drills

This ingenious and primitive way of drilling focuses very much on hand-to-eye co-ordination to produce a necklace or wristband.



Duke of Edinburgh's Award

Your Adventure Starts Here.



Entrust manage the DofE Licence for Staffordshire. We also hold an Approved Activity Provider Licence and can provide your DofE Expeditions on foot, by canoe/kayak or by bike.

DofE gives all young people aged 14-24 the chance to develop skills for life, work, fulfil their potential and have a brighter future. You will find yourself helping people from the community, getting fitter and developing a range of skills.

There are 3 AWARD LEVELS (Bronze, Silver and Gold). You achieve your Award by completing a personal programme of activities in four sections (five if you're going for Gold):

1. Volunteering
2. Physical
3. Skills
4. Expedition
5. Residential (Gold only).

How do I start my DofE Journey?

1. **Contact the DofE team at Entrust** - Decide what level of DofE programme you would like to do (Bronze, Silver or Gold) linked to your age. We will then send you an application form.
2. **Complete** a registration form and pay a registration fee to Entrust.

Once you are registered to start your DofE you will receive your online eDofE log in/link via email and a welcome pack in the post - containing information and your DofE Reward Card. You will use this account to record your DofE activities, upload pictures and keep a track of your progress. When you have completed each section, submit it for approval in your eDofE account. A member of the DofE Team will arrange to meet you to help you set up your account.

Engage & Achieve

Entrust offers a range of exciting outdoor programmes for secondary pupils to develop and grow their confidence.

GCSE Climbing

We can cater for all exam board syllabuses either as day visits or residential programmes utilising onsite climbing/bouldering facilities, commercial climbing walls and crags within the Peak District National Park.

Our experienced, qualified and active practitioners sitting under a Mountain Training recognised centre will enhance the depth of learning your pupils are exposed to.

Year 7 and 12 Transition

Our outdoor activity sessions will help to boost confidence, realise potential and develop bonds between pupils and staff.

Start the year with activities designed to challenge and bond for the year ahead. Ideally suited for groups of pupils who have had little or no previous interaction. Sessions can take place either on your school grounds or in one of our Outdoor Education Centres.

To find out more about our secondary programmes please call 033 300 1900 or email oebookings@entrust-ed.co.uk



Our Centres **Laches Wood**

Laches Wood has a rich mix of natural beauty and woodland shelter, as well as indoor and outdoor adventure.

Laches Wood is our largest centre. Boasting beautiful surroundings and an abundance of wildlife, pupils will make memories that last a life time.

A truly memorable location for a residential - Laches Wood boasts comfortable dormitory accommodation as well as a range of year-round adventure activities that challenge pupils.

Activities

- Archery
- Bushcraft Skills
- BMXing
- Canoeing
- Climbing & Bouldering
- High Ropes
- Indoor Caving
- Offsite Excursions
- Orienteering
- Search & Rescue



"This is the 4th year we have been to Laches Wood for a Twilight programme, we always have a great time. Staff as always are professional, knowledgeable and very helpful."

Ms S Deas, Y3 teacher,
Kingsway Primary School



Our Centres Shugborough

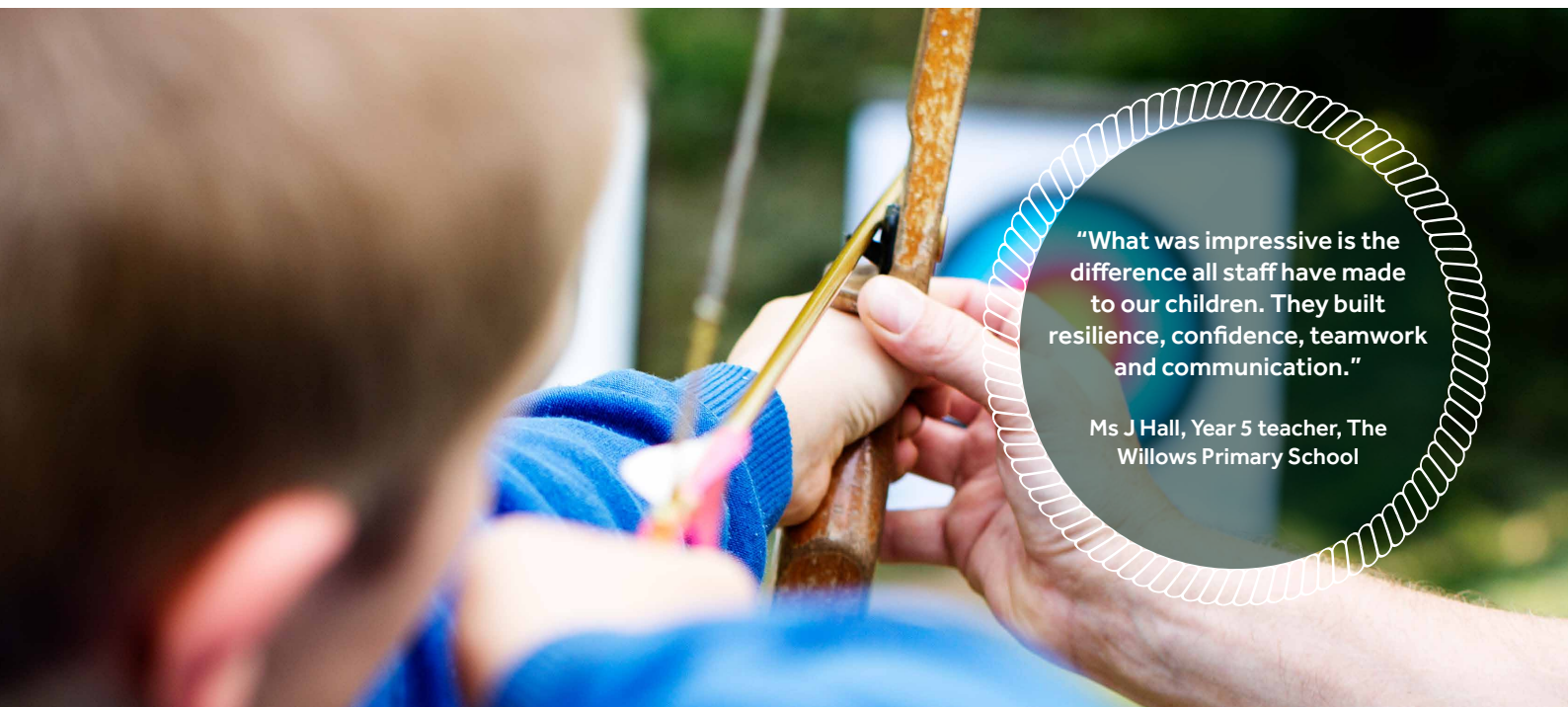
Set in the beautiful and historic parkland estate of Shugborough, our centre offers some truly outstanding activities on the river, in the forest or around the estate.

A world class venue for learning new skills, growing in confidence and coming to appreciate your place in the world.

Young people can truly connect with nature and form bonds with their peers in this unique setting of peace and beauty. After a full day of outdoor activities, the nightly campfire roars and makes the perfect setting for toasting marshmallows under the stars.

Activities

- Archery
- Bushcraft Skills
- BMXing
- Caving
- Canoeing/Kayaking
- Camping Village
- Climbing & Bouldering
- Mountain Biking
- Offsite Excursions
- Wildlife & Conservation



"What was impressive is the difference all staff have made to our children. They built resilience, confidence, teamwork and communication."

Ms J Hall, Year 5 teacher, The Willows Primary School



Our Centres **Standon Bowers**

A home for young people and the outdoor life since 1885, Standon Bowers is steeped in history and surrounded by beautiful English countryside.

With old time charm and a proven pedigree, Standon Bowers continues to offer outstanding outdoor learning through these modern times.

Whilst boasting an historic past, the facilities and activities at Standon Bowers are definitely of today. New activities and equipment just keeps appearing, including a state of the art BMX track designed by Olympic specialists and some great new accommodation options.

Activities

- Archery
- Bushcraft Skills
- BMXing
- Bridge Building
- Climbing
- Caving
- High Ropes
- Offsite Excursions
- Low Ropes
- Mine Exploration
- Scrambling



"We came back from Standon Bowers over a week ago, again could I say how superb our experience was. Everyone on site from cleaners to kitchen staff could not do enough for us."

Rocklands Special School,
Staffordshire



Find out more

To find out more about Outdoor Education, please call
0333 300 1900 or email **oebookings@entrust-ed.co.uk**

www.entrustoutdoors.co.uk

entrust
Inspiring Futures

Please note that prices and product specifications are correct at time of publication but remain subject to change without notice and may vary from time to time. Please contact Entrust to confirm pricing and product availability.